



**D·B·H·D·D**

Georgia Department  
of Behavioral Health  
& Developmental  
Disabilities

- BE D·B·H·D·D**
- BE COMPASSIONATE**
- BE PREPARED**
- BE RESPECTFUL**
- BE PROFESSIONAL**
- BE CARING**
- BE EXCEPTIONAL**
- BE INSPIRED**
- BE ENGAGED**
- BE ACCOUNTABLE**
- BE INFORMED**
- BE FLEXIBLE**
- BE HOPEFUL**
- BE CONNECTED**
- BE D·B·H·D·D**

# Behavioral Health Innovation and Reform Commission

## Hospital and Short-Term Care Subcommittee

---

**BE D·B·H·D·D**

Georgia Department of Behavioral Health & Developmental Disabilities

Dante McKay, J.D., Director

Office of Children, Young Adults & Families

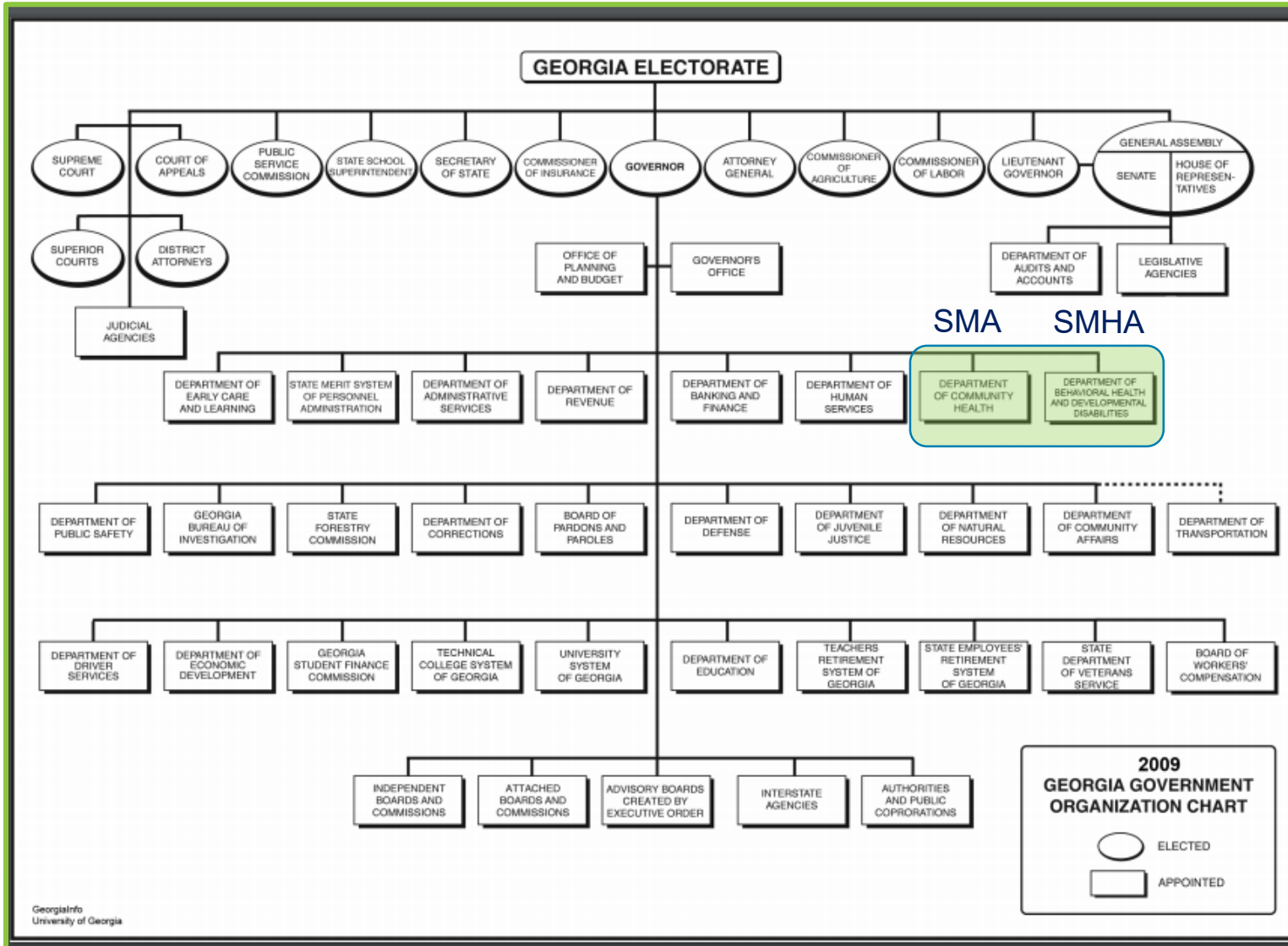
Wendy White Tiegreen, MSW, Director

Office of Medicaid Coordination & Health System Innovation



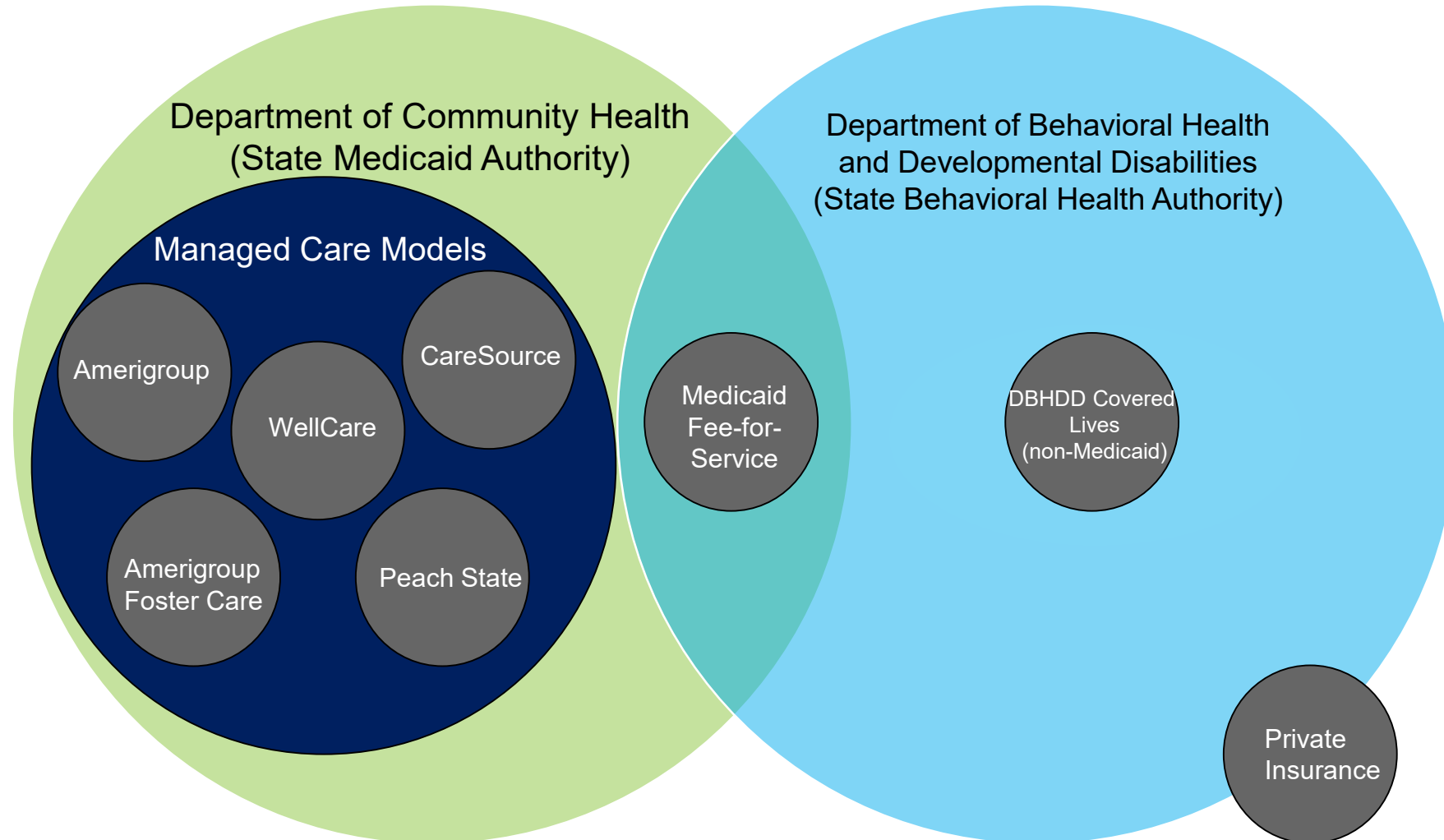
May 28, 2020

# State Law



## Role Definition: Sister Agencies

# State of Georgia Behavioral Health Public Payers



\*Individuals' eligibility status may change and they may move among circles.

# DBHDD-Funded Community-Based Inpatient

- Definition:
  - A short-term stay in a licensed and accredited community-based hospital for the stabilization of a psychiatric crisis. The service is of short duration and provides treatment for individuals experiencing an acute psychiatric crisis episode due to a new or recurring mental illness, non-compliance with medications, or a combination of these causes.
- Purpose:
  - Absolute payer of last resort for inpatient treatment options for individuals

# DBHDD-Funded C & A Community-Based Inpatient

Supplements four CSB operated C & A crisis stabilization units in Decatur, Macon, Newnan, and Savannah

1. Anchor (College Park)
2. The Bradley Center (Columbus)
3. Coastal Harbor Treatment Center (Savannah)
4. Greenleaf Behavioral Health Hospital (Valdosta)
5. Lakeview Behavioral Health (Norcross)
6. Laurel Heights (Atlanta)
7. Lighthouse Care Center (Augusta)
8. Ridgeview Institute (Monroe)
9. Ridgeview Institute (Smyrna)
10. Riverwoods Behavioral Health (Riverdale)
11. Willowbrooke at Tanner (Villa Rica)

# DBHDD-Funded Community-Based Inpatient

## FY 19 Utilization

Children & Adolescents	
<b>Unduplicated Individuals</b>	<b>507</b>
<b>Medicaid</b>	188
<b>Episodes</b>	592
<b>Total Units of Service</b>	5,361
<b>Total Dollars Paid</b>	\$ 3,714,810
<b>Average Units/Member</b>	10.6
<b>Average Dollars/Member</b>	\$ 7,327.04

Adults	
<b>Unduplicated Individuals</b>	<b>3,820</b>
<b>Medicaid</b>	309
<b>Episodes</b>	4,397
<b>Total Units of Service</b>	29,914
<b>Total Dollars Paid</b>	\$ 20,187,030
<b>Average Units/Member</b>	7.8
<b>Average Dollars/Member</b>	\$ 5,284.56

# Psychiatric Residential Treatment Facility

- Definition

- Federal

- “A PRTF is any non-hospital facility with a provider agreement with a State Medicaid Agency to provide the inpatient services benefit to Medicaid-eligible individuals under the age of 21 (psych under 21 benefit).”<sup>1</sup>
    - “A PRTF is to provide a less medically intensive program of treatment than a psychiatric hospital or a psychiatric unit of a general hospital.”<sup>2</sup>

- State

- A PRTF is an inpatient facility which provides:
      - the most intensive level of behavioral health residential treatment for youth and young adults available; and
      - Targets children, adolescents, and young adults twenty-one (21) years of age or younger who, due to severe emotional disturbance, are in need of quality active treatment that can only be provided through intensive, focused treatment to promote a successful return of the youth/young adult to the community.<sup>3</sup>

<sup>1</sup> <https://www.cms.gov/Medicare/Provider-Enrollment-and-Certification/CertificationandCompliance/Downloads/WhatisaPRTF.pdf>

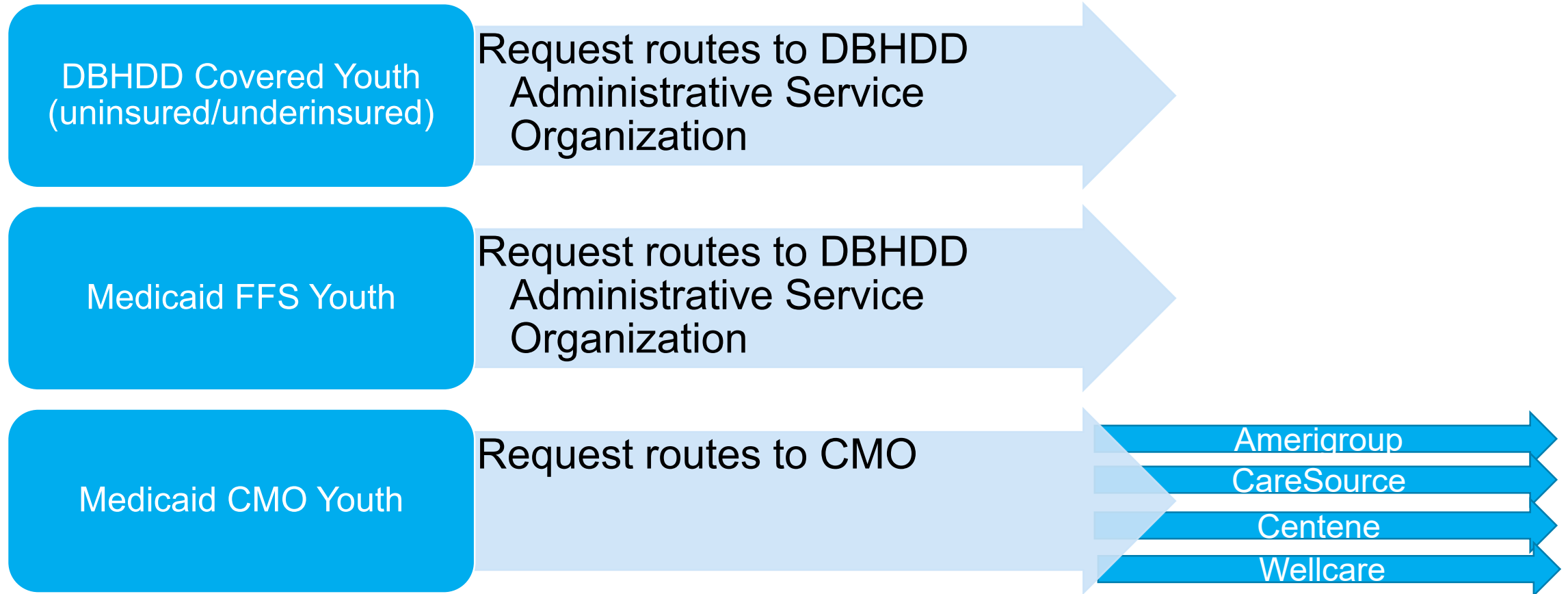
<sup>2</sup> CMS S&C-07-15

<sup>3</sup> [DBHDD Policy #01-303](#)

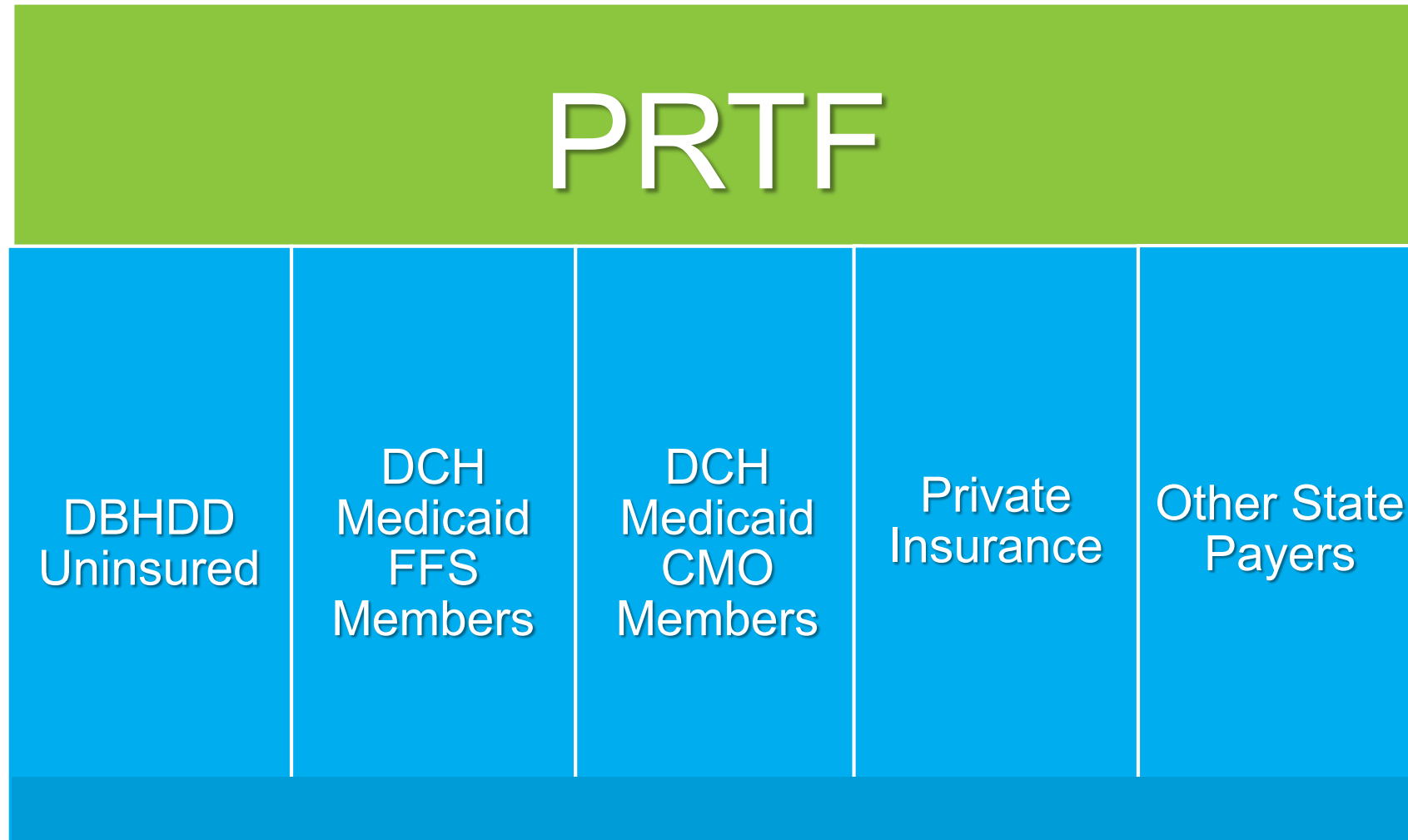


# Psychiatric Residential Treatment Facility

## Authorization Processes



# Psychiatric Residential Treatment Facility: Payer Mix



The following slides were provided by DBHDD in February and are offered here for convenience of the participants.

# DBHDD Hospital Services: Utilization and Capacity

---

**BE D·B·H·D·D**

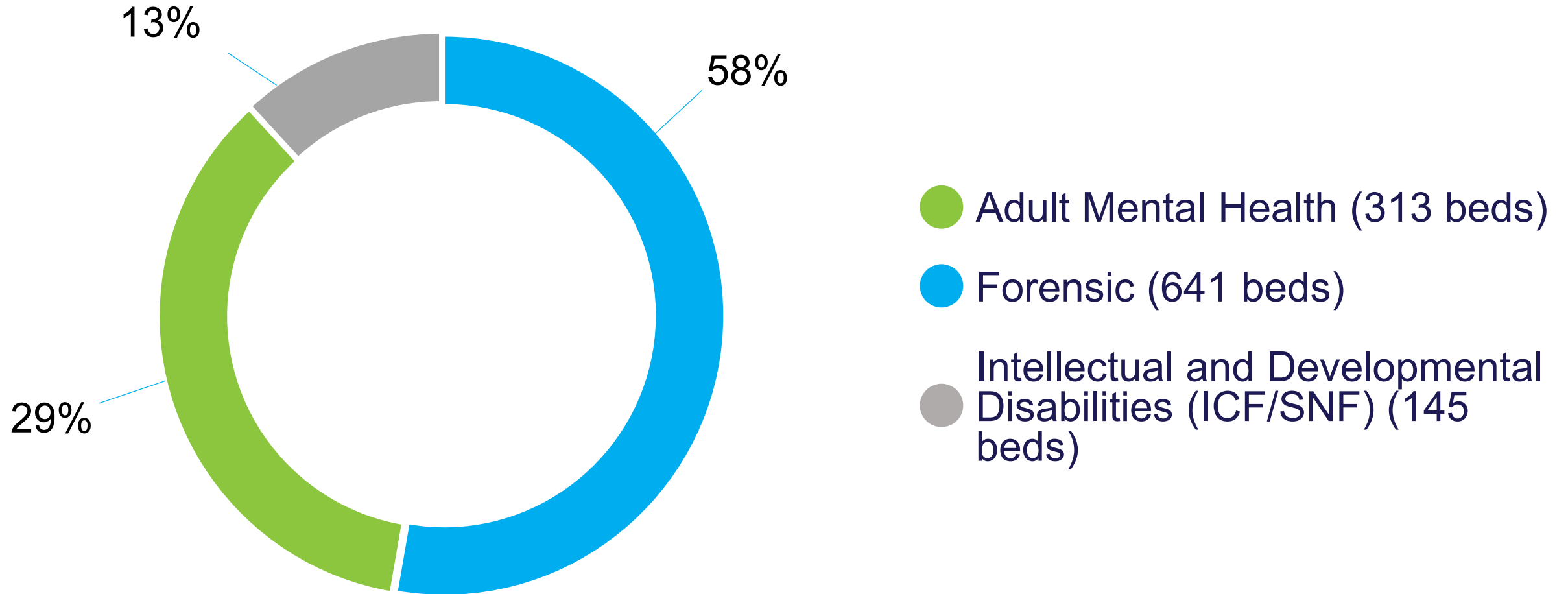
Georgia Department of Behavioral Health & Developmental Disabilities

Dr. Delquis Mendoza  
Clinical Director, Georgia Regional Hospital, Atlanta

February 7, 2020



# DBHDD Hospital Bed Capacity



Total Bed Capacity: 1,099

*As of December 12, 2019*

# DBHDD Inpatient Bed Capacity

Hospital	Adult Mental Health	Forensic	I/DD	Nursing Home	TOTAL
GRHA - Atlanta	114	124		23	261
WCGRH - Columbus	40	154			194
CSH - Milledgeville		182			182
ECRH - Augusta	90	71	97	25	283
GRHS - Savannah	69	110			179
Total	313	641	97	48	1,099

# DBHDD Funded Behavioral Health Crisis Services: Utilization and Capacity

The following slides were provided by DBHDD in February and are offered here for convenience of the participants.

**BE D·B·H·D·D**

Georgia Department of Behavioral Health & Developmental Disabilities

Debbie Atkins, MAC, LPC  
Director of Crisis Coordination

Monica Parker, MA, LPC  
Director Division of Behavioral Health



February 7, 2020

# Adult Crisis Utilization & Capacity FY19

Type of Facility	Number of units	Number of beds	Total Served
State funded Detoxification Facility (Voluntary)	3	N/A	1,117
CSU/BHCC	23	509	26,224
State Contract Hospital Beds	11	N/A	4,546

# Children/Youth Crisis Utilization & Capacity FY19

Type of Facility	Number of units	Number of beds	Total Served
Crisis Stabilization Unit (CSU)	4	71	2,145
Contracted Psychiatric Hospital (SCB)	12	n/a	619
Psychiatric Residential Treatment Facility (PRTF)	6	n/a	108